

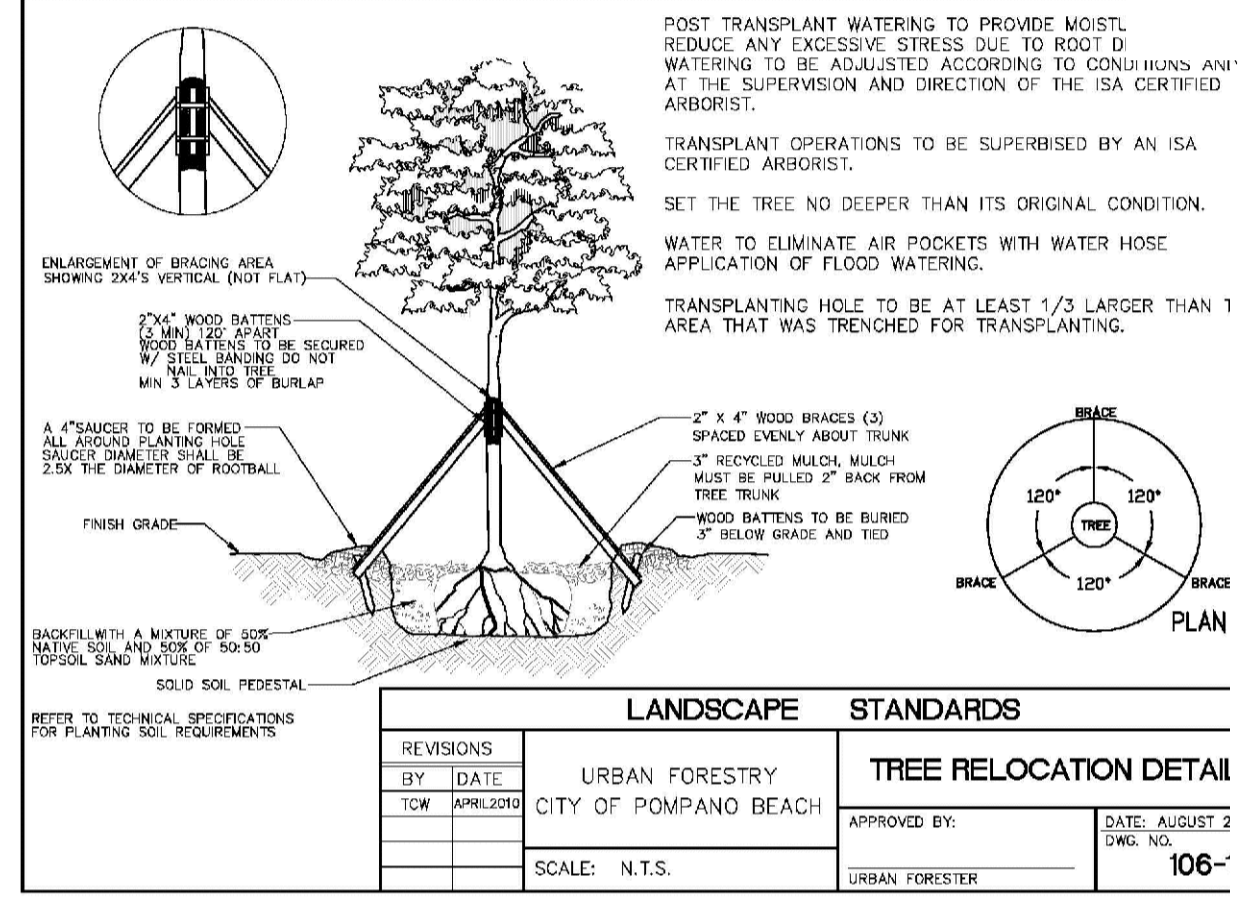
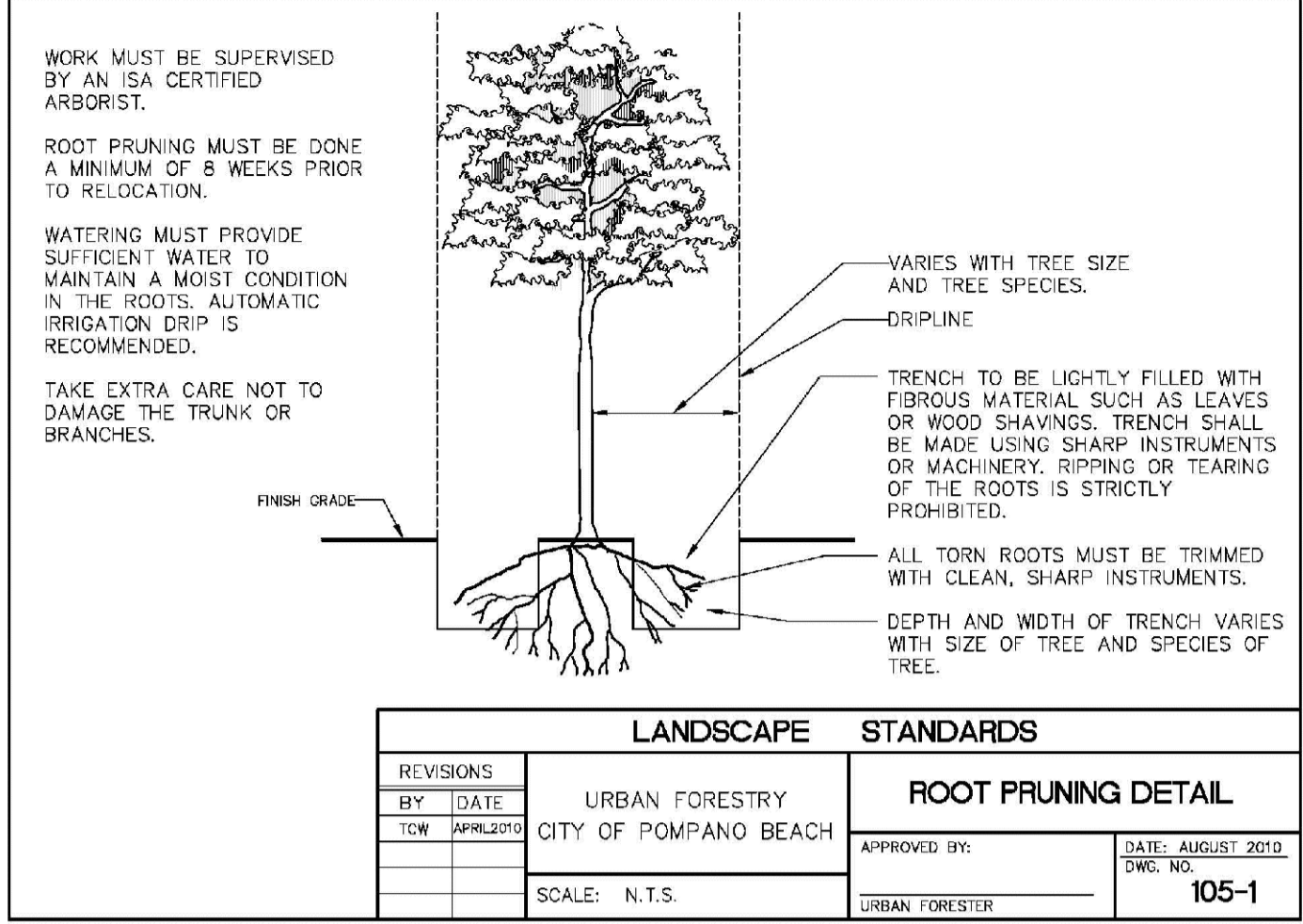
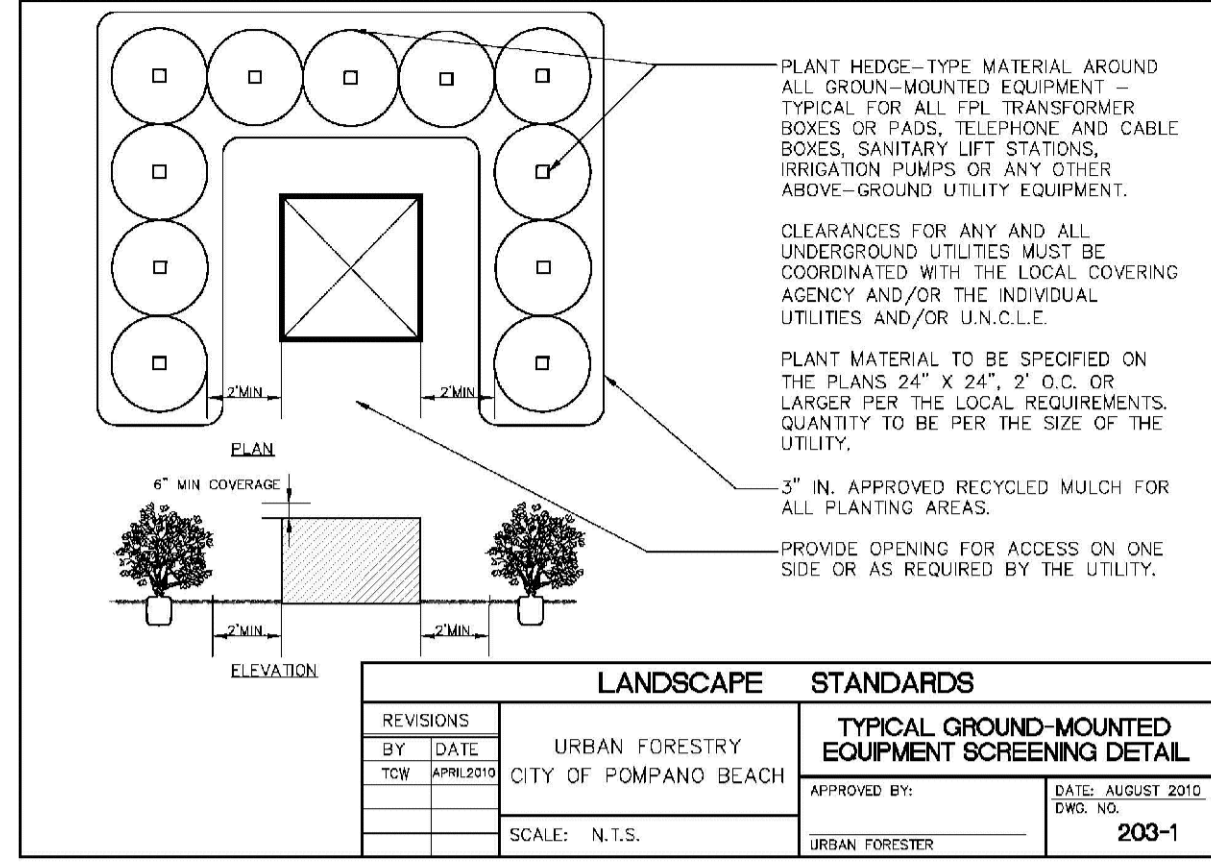
DRC  
PZ23-12000032  
08/07/2024

DRC  
PZ23-12000032  
04/17/2024

REMOVE ALL INVASIVE PLANT MATERIAL, DEAD AND BROKEN BRANCHES AND WEEDS DOWN TO BARE SOIL

SCOPE OF WORK

ANDREWS AVENUE EXTENSION



**TREE RELOCATION PROCEDURAL SPECIFICATION**

Tree, Palm, Shrub and other Plant Transplanting/Relocating Detail - Recommended Notes:

The American National Standard for Tree Care Operations - Tree, Shrub, and Other Woody Plant Maintenance - Standard Practices (Transplanting) ANSI A300 (Part 6)-2005 must be adhered to in its entirety for all relocating/transplanting of trees and shrubs. ANSI A300 (Part 6)-2005 includes the following:

60- Transplanting Standards  
61- Normative References  
62- Definitions  
63- Transplanting Practices

The transplanting objectives shall be established prior to beginning the operation. These objectives may be presented in a report format for permitting purposes.

A feasibility and suitability assessment shall be conducted prior to recommending transplanting. Specifications for transplanting should be based on the assessment. See the Checklist in Annex A of ANSI A300 (Part 6)-2005. This assessment may be presented in a report format for permitting purposes.

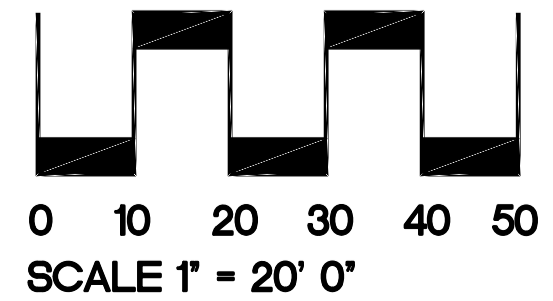
- NOTES:
- PER CITY ORDINANCE(S) 5002(AX4) AND 10035(E), STREET TREES SHALL NOT BE PLACED ON TOP OF OR 8'-0" ON EITHER SIDE OF ANY CITY OWNED UTILITY INFRASTRUCTURE.
  - NO TREES, SHRUBBERY OR OBSTRUCTION SHALL BE PLACED WITHIN A 3'-0" RADIUS OF A CITY OWNED SEWER LATERAL CLEANOUT OR WATER 4/OR REUSE METER.
  - A PRE-CONSTRUCTION MEETING WITH CITY OF POMPAÑO BEACH, URBAN FORESTRY, IS REQUIRED BEFORE ANY PLANT MATERIAL IS INSTALLED ON SITE.
  - ALL ROAD ROCK, CONCRETE, ASPHALT AND OTHER NOT NATURAL MATERIALS SHALL BE REMOVED FROM PLANTING AREAS PRIOR TO LANDSCAPE INSTALLATION.
  - ALL TREE WORK WILL REQUIRE PERMITTING BY A REGISTERED BROWARD COUNTY TREE TRIMMER.
  - ALL TREES DESIGNATED AS SINGLE TRUNK SHALL HAVE A SINGLE, RELATIVELY STRAIGHT, DOMINANT LEADER. PROPER STRUCTURAL BRANCHING AND EVEN BRANCH DISTRIBUTION. TREES WITH BARK INCLUSION, TIPPED BRANCHES, AND CO-DOMINANT TRUNKS WILL NOT BE ACCEPTED. TREES WITH GIRDLING, INTACT LEADER CIRCLING AND OR FLUNGING ROOTS WILL BE REJECTED.

CAUTION: PLEASE NOTE

This drawing is a computer-generated file. It is not to be reproduced in part or in whole without express written permission. Florida Registration LA 1039.

SUBMISSION  
02/14/24

NOT FOR CONSTRUCTION



ISSUE HISTORY  
PROJ NO: 23034A  
PROJ MGR: DC  
DRAWN BY: DC  
CHECKED BY: KWD

DRAWING TITLE:  
Existing Landscape Plan

SHEET:  
009.2 L-2

**KWD**  
LANDSCAPE ARCHITECTURE  
101 SE 2nd Avenue, Second Floor  
Delray Beach, Florida 33444  
studio@kwddesignteam.com  
Telephone: 561-243-1873  
Krent L. Wieland, FL Reg LA 1039  
Cert. of Authorization LC26000275

**Bonsal Turn Lane**  
1200 NW 18th St  
Pompano Beach, FL 33069

Digitally signed by  
Krent L. Wieland  
Date: 2024.03.01  
09:47:40  
-05'00'